

2024 Annual Conference

IN This Together

Wednesday, May 22

9:00 AM - 3:30 PM ET

Washington Township Pavilion Center

435 Whipple Ln, Avon, IN 46123



SPONSORS

THANK YOU TO OUR SPONSORS!

Silver Sponsors



Bronze Sponsors



SCHOOL OF
PUBLIC HEALTH
Indiana University Bloomington



**THE INDIANAPOLIS
FOUNDATION**
A CICF AFFILIATE

Exhibitors

American Red Cross Indiana Region
Indiana Cancer Consortium
Indiana Rural Health Association
University of Indianapolis

AGENDA

9:00 AM GUEST CHECK-IN & BREAKFAST
EXHIBITOR TABLES

10:00 AM OPENING REMARKS

10:10 AM KEYNOTE PRESENTATION

Melissa Monbouquette, MPA
BUILD Health Challenge

11:15 AM ABSTRACT PRESENTATIONS

12:00 PM LUNCH & NETWORKING
EXHIBITOR TABLES

1:00 PM BREAKOUT SESSIONS

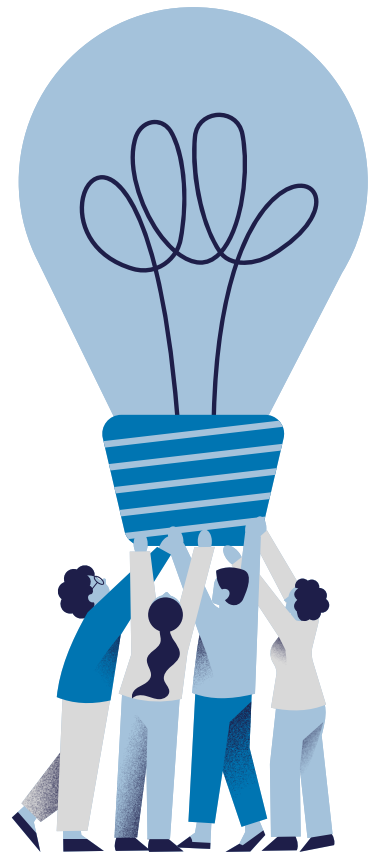
Local Health Partnerships
Housing is Health

2:00 PM BREAK

2:15 PM FIRESIDE CHAT

Cultivating Partnerships
for Hoosier Health

3:15 PM CLOSING REMARKS



Melissa Monbouquette

Executive Director BUILD Health Challenge

Melissa Monbouquette, MPA, is the Executive Director of The BUILD Health Challenge® (BUILD), a national initiative that is creating sustainable health improvements and advancing health equity by supporting community-centered, multi-sector partnerships across the U.S. Melissa leads the program's innovation and equity practices to drive sustainable improvements in health for all. She serves as a thought leader and key resource for awardees and partners through BUILD's strategy, implementation, and learning.

Melissa has built her career in nonprofit strategy and operation and is dedicated to ensuring that communities have what they need to thrive. Prior to her work with BUILD, she served as a Program Officer with the de Beaumont Foundation where she managed a portfolio of projects focused on cross-sector collaboration, social determinants of health, and workforce development in the public health sector. She has also held roles at the National Children's Museum, the Pew Research Center, and the Museo del Prado.

Melissa is a GIH Terrance Keenan Institute Fellow, a member of the Board for Communities Joined in Action, and a former steering committee member for Emerging Practitioners in Philanthropy. She has a master's degree from The George Washington University Trachtenberg School of Public Policy and Public Administration, and a bachelor's degree from Tufts University.

Kathleen Sobiech

***Indiana University School of Public Health - Bloomington
Director of Public Health Practice, Accreditation, and
MPH Program***

Kathleen Sobiech, PhD, has over 20 years of experience developing and managing public health initiatives, programs, and research projects to improve community health in the US, Senegal, Liberia, Kosovo, and Indonesia. Currently, she serves as the Director of Public Health Practice, Accreditation, and MPH Program at Indiana University's School of Public Health – Bloomington, leveraging academic resources to build public health workforce capacity and promote systems-level change. She also instructs Public Health Policy & Politics.

Nejla Routsong

***CAPS Commission
Member***

Nejla Routsong is a member of the CAPS Commission, leading its work in community safety based on her background in social entrepreneurship. Routsong has an MA in International Relations and an MBA in Entrepreneurship, as well as 15 years of university teaching experience. Currently enrolled the MS in Science and Technology for Innovation in Global Development at Worcester Polytechnic Institute, she hopes to complete her Ph.D. on system dynamics of guard labor and care economy.

Kisha Hampton

***Sickle Cell Team Lead
Indiana Hemophilia & Thrombosis Center***

Kisha Hampton has been practicing public health for over 28 years specifically focusing on Sickle Cell. She received her Master's in Public Health with an emphasis in BHS from Indiana University School of Medicine. She currently serves as the Sickle Cell Team Lead at the Indiana Hemophilia & Thrombosis Center (IHTC) and is the VP and Director of Education for Journeys By Grace Global Missions, Inc... In her role at the IHTC, she provides education and coordination to individuals with sickle cell disease, trains and on boards new staff as well as plan various meetings, education sessions and outreach clinics around the state. Kisha has presented at over 30 conferences worldwide on topics related to Sickle Cell. She has been instrumental in the development and implementation of numerous health education health promotions materials and programs. Kisha is a member of many non-profit and national organizations. Her interests include program development, international health, and advocacy. She is the proud mother of four boys, grandmother of five and a proud life member of Zeta Phi Beta Sorority, Inc.

Melissa Thomas

***Research Specialist, Center for Health Services Research
Regenstrief Institute***

Melissa Thomas, CHES, graduated from the Richard M. Fairbanks School of Public Health and the IU School of Liberal Arts with highest distinction in 2023. She is currently working full-time as a Research Specialist at the Center for Health Services Research, Regenstrief Institute. She also completes contract writing work with the IU School of Medicine, and coaches youth soccer for community-based clubs in Indianapolis. She is originally from Bloomington, IN.

Tess Weathers

***Epidemiologist and Research Associate
Department of Social & Behavioral Sciences
Indiana University Fairbanks School of Public Health***

Tess D. Weathers, MPH, is an epidemiologist and research associate in the Department of Social & Behavioral Sciences at the IU Fairbanks School of Public Health. She has conducted two influential analyses of life expectancy in the Indianapolis metropolitan area, drawing attention to a gap of more than 14 years in lifespan by ZIP code. In her work, she focuses on the social drivers of health and illness, and she teaches an undergraduate course in health equity.

Chase Cotten

***Community Director
The Willow Center***

Chase Cotten is the Community Director at The Willow Center, a mental health counseling and substance use treatment agency in Brownsburg, IN. It's his privilege to manage their public relations, community organizing, creative media, prevention education, and business development efforts. He also serves as the co-president of the Hendricks County Health Partnership. He likes to think of himself as a multi-potentialite. Chase's mission is to live and work in a way that will ensure his epitaph reads 'he made a positive difference.'

Michael Aviah

***Public Health Education Specialist
Hendricks County Health Department***

Michael Aviah is the Public Health Education Specialist at the Hendricks County Health Department, and co-coordinates the Hendricks County Health Partnership. At the Health Department, his role includes providing health education and trainings to the community, promoting public health information and resources via different channels, connecting individuals to resources, planning and implementing public health programs, and outreach efforts. His public health passion is working to improve health inequities amongst marginalized communities and building an accessible community to anyone. In his free time, he enjoys being creative and diving into his hobbies- like gardening, baking/cooking, drawing, and creating things that look fun.

Jason Ravenscroft

***Administrator
Department of Water Quality and Hazardous
Materials Management
Marion County Public Health Department***

Jason Ravenscroft is the Administrator for the Department of Water Quality and Hazardous Materials Management for the Marion County Public Health Department and serves as an adjunct faculty member for the Indiana University Fairbanks School of Public Health. He holds an undergraduate degree in biology and a Master of Public Health with an epidemiology concentration.

Abby Church

***Homeless Health Infectious Disease Manager
Indiana Housing and Community Development Authority***

Abby Church is the Homeless Health Infectious Disease (HHID) Manager at the Indiana Housing and Community Development Authority (IHCDA). In this role, she oversees the efforts to work alongside shelters and other congregate living facilities to provide infectious disease mitigation support for testing, vaccination, infectious disease education, additional housing for isolation and quarantine by building the capacity of local agencies and communities to prepare and respond to public health emergencies, such as the COVID-19 pandemic, in appropriate ways so that homelessness, when experienced, is rare, brief, and non-recurring.

Alison Cole

***Policy Analyst
Indiana Department of Health***

Alison joined the Indiana Department of Health in 2023 to work on public policy issues pertaining to Housing policy as a Social Determinant of Health. Over her career, Alison has worked in a variety of positions pertaining to safe and affordable housing including serving twelve years with the City of Indianapolis as a Principal Planner working on a variety of housing plans and projects at the local, state and federal government levels. Alison worked for six years with Fannie Mae, working with mortgage lenders and community development leaders to create affordable housing solutions across IN. She was a founding board member of the Coalition for Homeless Intervention and Prevention (CHIP), served as Board President of Habitat of Humanity for Greater Indianapolis and served on the Dayspring Family Shelter.

Andrew Bylsma

***Administrator
Elkhart County Health Department***

Andrew Bylsma works as the Health Administrator serving at the Elkhart County Health Department. Andrew lives in Bristol, Indiana with his wife, two sons, one dog and many chickens. Professionally, Andrew is committed to improving public health through education, outreach, and collaboration with local organizations. Academically, he is interested in data-informed decision-making, enhancing the impact of public health initiatives.

Jennifer Pferrer

***Executive Director
Wellness Council of Indiana***

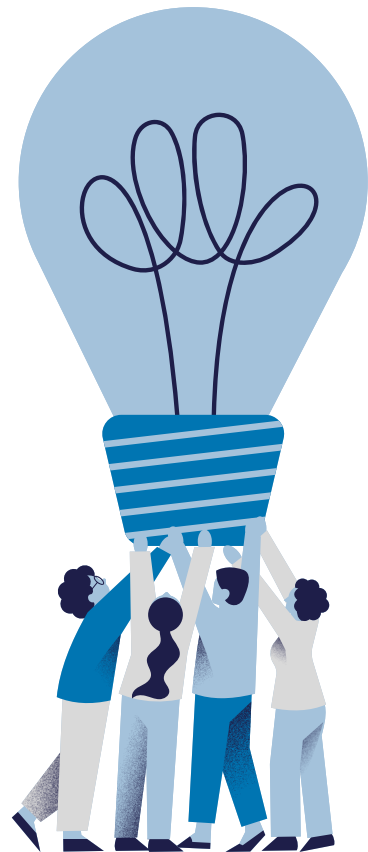
Jennifer Pferrer joined the Indiana Chamber of Commerce in April 2017 as the Executive Director for the Wellness Council of Indiana. With over 30 years of experience working in healthcare, Jennifer understands the impact individual health has on the corporate bottom line and why corporate wellness is critical to corporate and community development. With experience in the hospital and non-profit setting, Jennifer led efforts in brand alignment, organizational development, and strategic oversight to local and regional initiatives. Jennifer has significant insights to how consumers engage with the healthcare and the role of employers in improving individual wellbeing. Jennifer earned her bachelor's degree from Ball State University. She resides in Noblesville with her husband and is a mom to three sons.

SPEAKERS

Michelle Matern

*Southern Regional Director
Indiana Department of Health*

Michelle Matern is the Southern Regional Director with the Indiana Department of Health. She has been in this position for nearly a year. Previously, she served as a local health department administrator for 7 years. Michelle has her Masters in Health Administration from the IU Fairbanks School of Public Health. In her free time, she enjoys spending time with her husband, our two kiddos and goldendoodle.



Stay connected with IPHA!

Visit our website

www.inpha.org

Sign up for our e-newsletter



Follow us on social media

